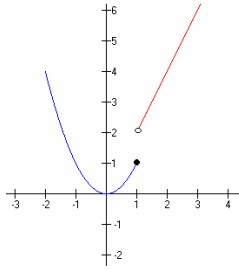
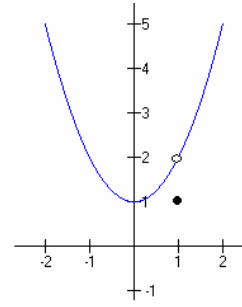


Find the x -values at which the function is not continuous. Which of the discontinuities are removable?

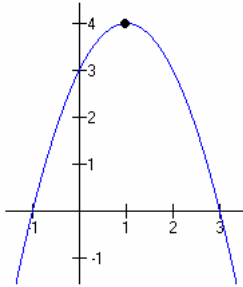
1.



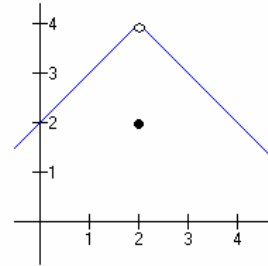
2.



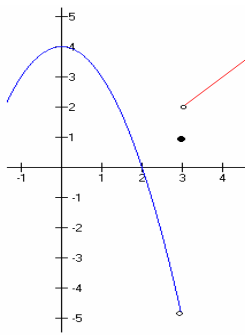
3.



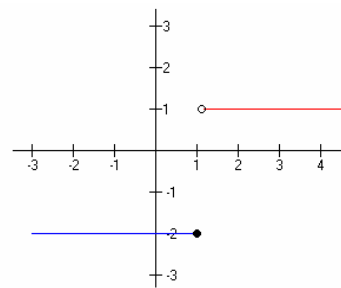
4.



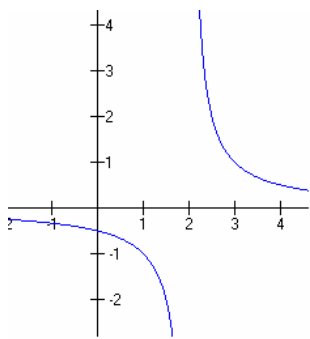
5.



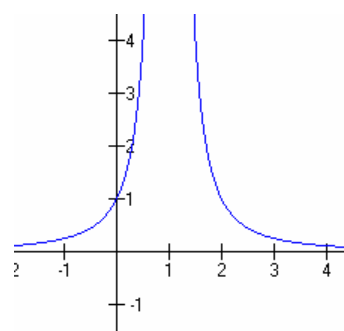
6.



7.



8.



Answers

- 1. Break at $x = 1$ 2. Hole at $x = 1$ 3. continuous 4. Hole at $x = 2$
- 5. Break at $x = 3$ 6. Break at $x = 1$ 7. vertical asymptote at $x = 1$
- 8. vertical asymptote at $x = 1$